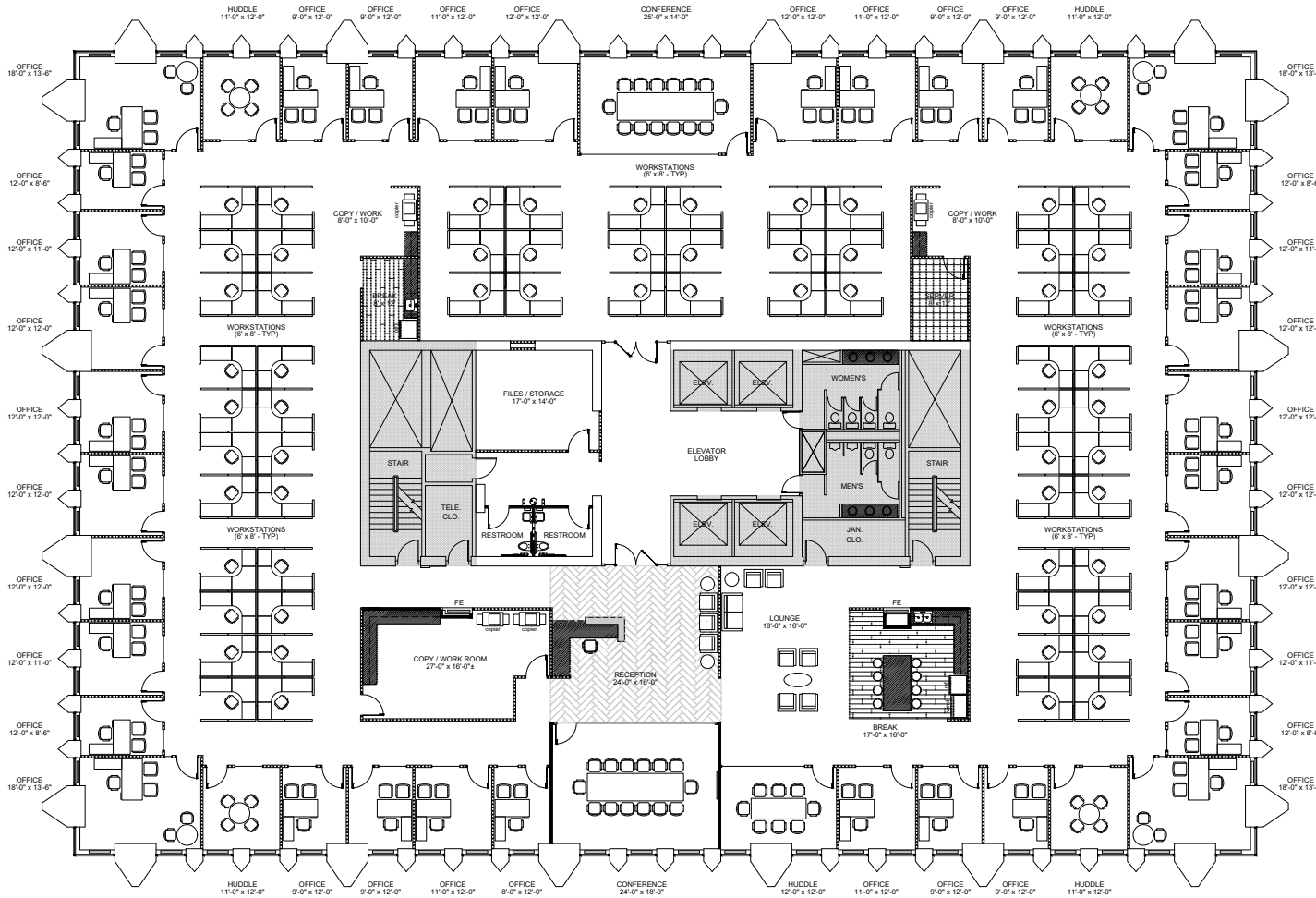
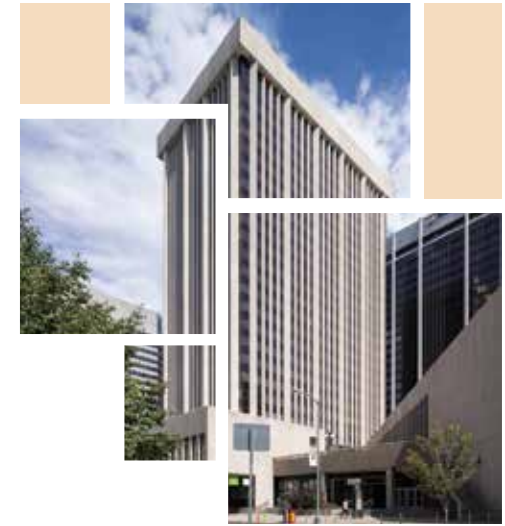


# INDEPENDENCE — PLAZA —

## Office Tower

Suite 1900 - 19,646 SF

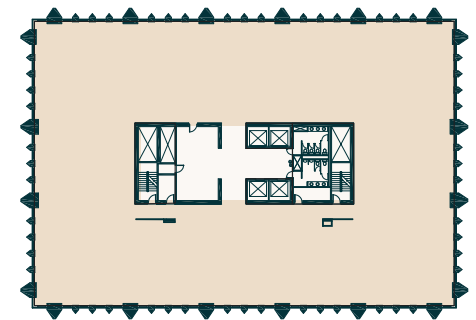
HYPOTHETICAL - PERIMETER OFFICES



### Notes

- 35 offices
- 62 workstations
- 97 total employees (202 sf ea.)

### Key Plan



To schedule your tour, contact the leasing team:

**MICHAEL CRANE**  
+1 303 260 6533  
michael.crane@am.jll.com

**ANDY ROSS**  
+1 303 260 6504  
andy.ross@am.jll.com

**JLL**  
Jones Lang LaSalle Brokerage, Inc.

**HEITMAN**  
A REAL ESTATE INVESTMENT MANAGEMENT FIRM