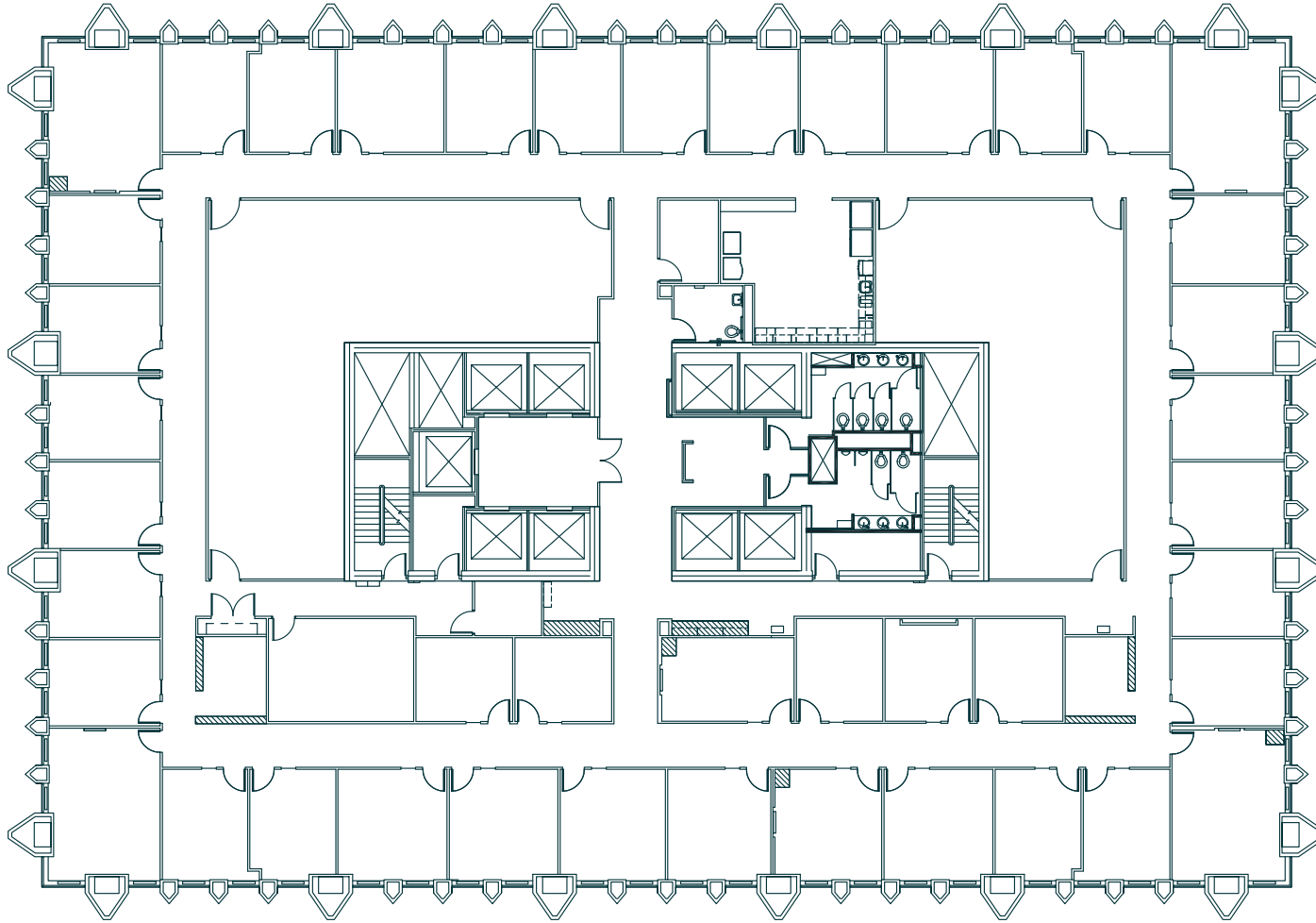


# INDEPENDENCE — PLAZA —

## Office Tower

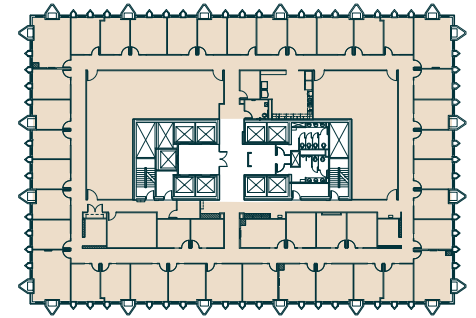
Suite 1400 - 19,234 SF  
AS-BUILT



### Notes

- 37 Perimeter offices; 4 interior
- 3 Conference rooms
- 2 file storage / work rooms
- Kitchen
- 1 private restroom

### Key Plan



[TOUR THIS SPACE!](#)



To schedule your tour, contact the leasing team:

**MICHAEL CRANE**  
+1 303 260 6533  
michael.crane@am.jll.com

**ANDY ROSS**  
+1 303 260 6504  
andy.ross@am.jll.com

**JLL**  
Jones Lang LaSalle Brokerage, Inc.

**HEITMAN**  
A REAL ESTATE INVESTMENT MANAGEMENT FIRM