

INDEPENDENCE — PLAZA —

Office Tower

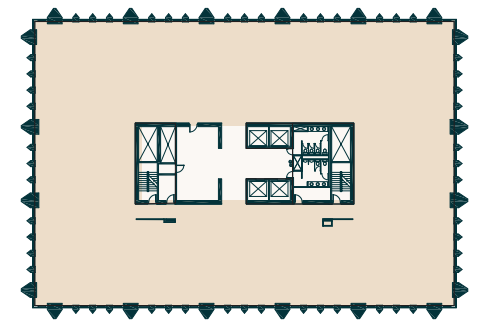
Suite 1900 - 19,646 SF
AS-BUILT



Notes

- White boxed condition
- Open ceiling condition
- Excellent mountain views
- Mens & Women's restrooms

Key Plan



[TOUR THIS SPACE!](#) 



To schedule your tour, contact the leasing team:

MICHAEL CRANE
+1 303 260 6533
michael.crane@am.jll.com

ANDY ROSS
+1 303 260 6504
andy.ross@am.jll.com


Jones Lang LaSalle Brokerage, Inc.

HEITMAN
A REAL ESTATE INVESTMENT MANAGEMENT FIRM