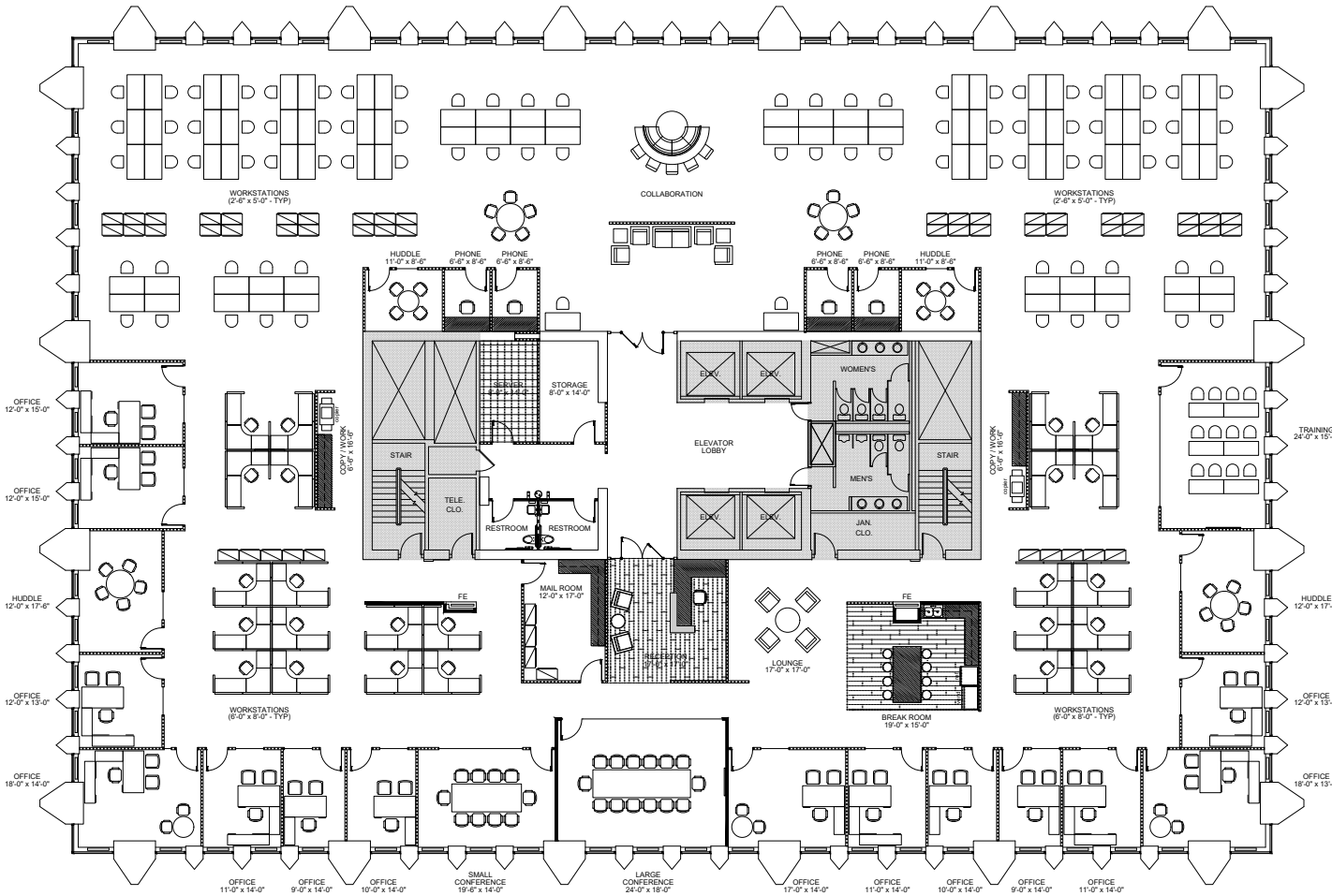
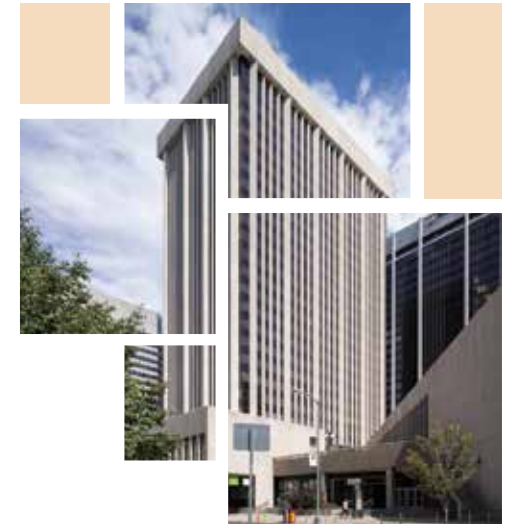


INDEPENDENCE — PLAZA —

Office Tower

Suite 1900 - 19,646 SF

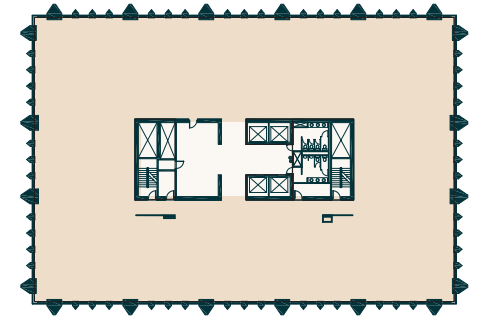
HYPOTHETICAL - MOSTLY OPEN



Notes

- 14 offices
- 108 workstations
- 122 total employees (161 sf ea.)

Key Plan



To schedule your tour, contact the leasing team:

MICHAEL CRANE
+1 303 260 6533
michael.crane@am.jll.com

ANDY ROSS
+1 303 260 6504
andy.ross@am.jll.com

JLL
Jones Lang LaSalle Brokerage, Inc.

HEITMAN
A REAL ESTATE INVESTMENT MANAGEMENT FIRM